

ZXCT1023EV1 USER GUIDE

DESCRIPTION

The ZXCT1023EV1 evaluation board is intended for the evaluation of the ZXCT1023 device.

The ZXCT1023 is a precision high-side current sense monitor, which eliminates the need to disrupt the ground plane when sensing a load current. The ZXCT1023 provides a fixed gain of 50 for applications where minimal sense voltage is required. The very low offset voltage enables a typical accuracy of 3% for sense voltages of only 10mV, giving better tolerances for small value sense resistors necessary at higher currents. The wide input voltage range of 20V down to as low as 2.5V makes it suitable for a range of applications.

It requires no additional components, thus making it a versatile device with minimal component count.

The ZXCT1023 in the TDFN1218-4L package is fitted as supplied, but the PCB allows for fitting the TDFN2020-6L packaged version instead.

There is also a position for fitting a test socket (TSK1) if desired.

R3 consists of two pads with a hole in each pad, or connecting an external R_S if required.

With the values shown, the board produces an output of 2.5V/A

The target applications are battery chargers, power supply units and other applications where high side current measurement is a requirement.

The input voltage (voltage on V_{SUP}) range for the ZXCT1023EV1 is from 2.5V to 20V.

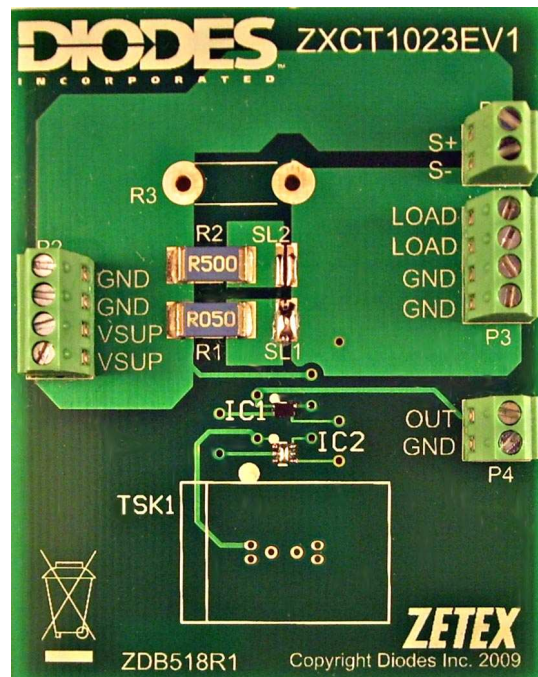


Figure 1. ZXCT1023 Evaluation Board

FEATURES

- High side current sensing
- Supply Range 2.5V to 20V.
- Fixed gain of 50
- 3% typical accuracy
- TDFN1218-4L or TDFN2020-6L package

APPLICATIONS

- Battery Charging
- Power Supplies
- Over-current Monitoring
- Automotive current measurement

ORDERING INFORMATION

| ORDER NUMBER |
|--------------|
| ZXCT1023EV1 |

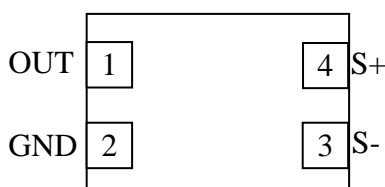
Please note evaluation boards are subject to availability and qualified leads.

PAD NAMES AND DEFINITIONS

| NAME | DESCRIPTION |
|------------------|--------------------|
| V _{SUP} | Supply Voltage |
| LOAD | Connection to Load |
| OUT | Output Voltage |
| GND | 0V / Ground |
| SL1,SL2 | Solder Links |

PIN-OUT INFORMATION

(top view)
TDFN1218-4L



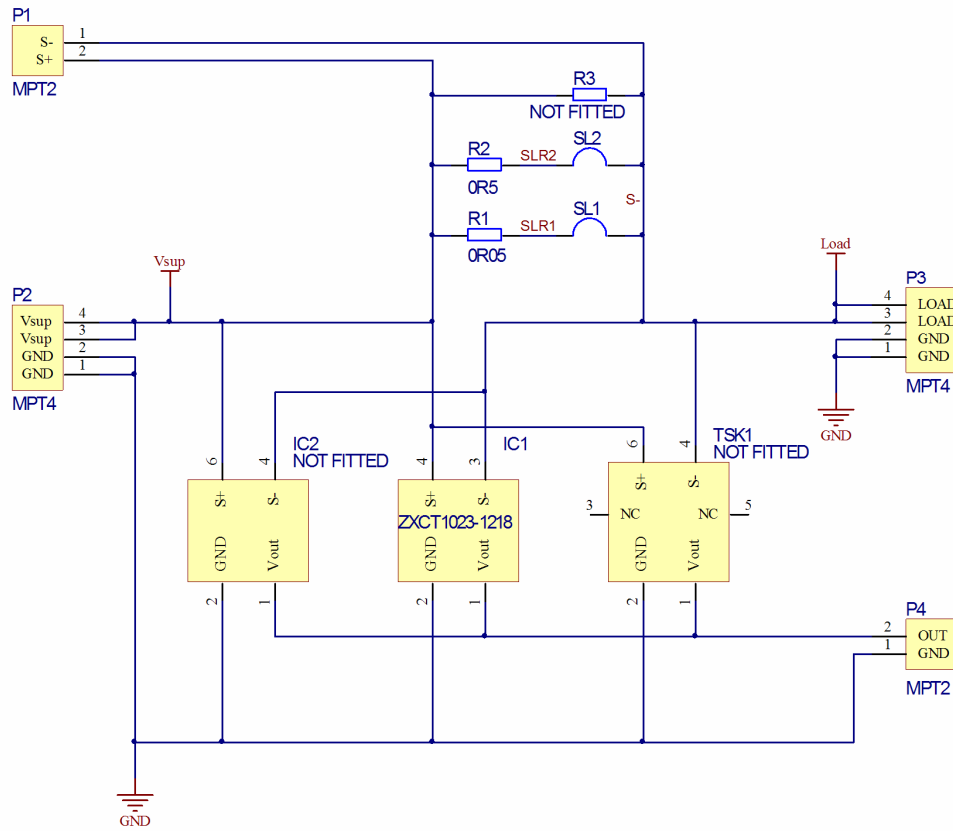


Figure 2. ZXCT1023EV1 Schematic

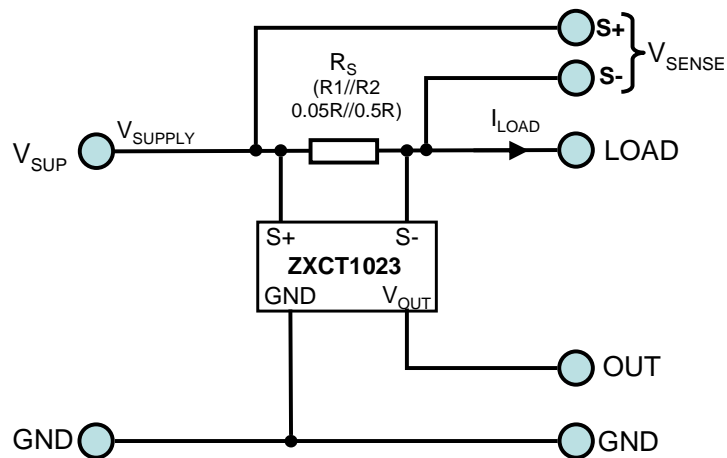


Figure 3. Simplified Schematic

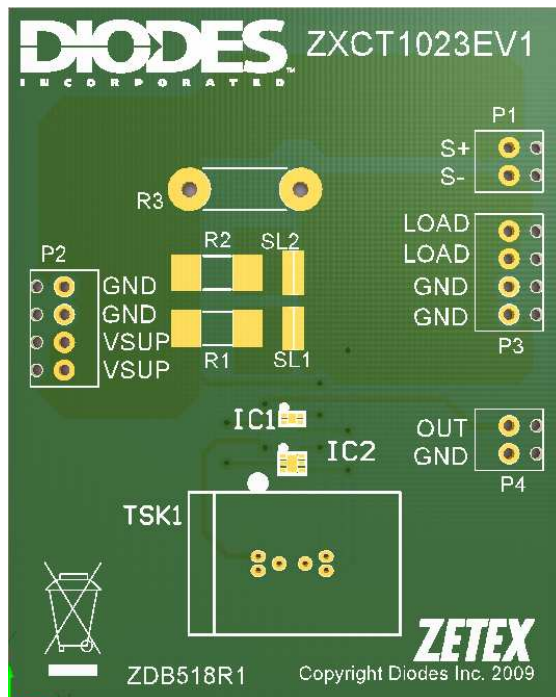


Figure 4. Evaluation board components' layout

Components List

| Ref | Value | Package | Part Number | Manufacturer | Notes |
|--------|------------|----------|-----------------|--------------|--------------------------|
| R1 | 50mΩ | 2512 | LR2512-R050FI | Welwyn | SMD Sense Resistor 1% |
| R2 | 500mΩ | 2512 | LR2512-R500FI | Welwyn | SMD Sense Resistor 1% |
| R3 | NOT FITTED | | | | |
| IC1 | ZXCT1023 | TDFN1218 | ZXCT1023DFGTC | Diodes Inc | |
| IC2 | NOT FITTED | TDFN2020 | ZXCT1023DEETC | Diodes Inc | |
| TSK1 | NOT FITTED | | 03717 017 X218E | Loranger | DFN2020 socket |
| P1, P4 | | | 1725656 | Phoenix | Terminal Block, 2 way |
| P2, P3 | | | 1725672 | Phoenix | Terminal Block, 4 way |

Configuration table for ZXCT1023EV1

| LOAD CURRENT (A) | R _{SENSE} (mΩ) | V _{OUT} (V) | SOLDER LINK CONFIGURATION |
|------------------|-------------------------|----------------------|---------------------------|
| 1.0 | 50 | 2.5 | Short SL1 |
| 0.1 | 500 | 2.5 | Short SL2 |
| 1.0 | 45.4 | 2.273 | Short SL1 & SL2 |

Sense resistor

The board has been designed with two selectable values of sense resistor. The value of the sense resistor can be chosen by using the solder links SL1 and SL2.

The 50mΩ resistor (R1) is selected by shorting SL1 and opening SL2. This results in an output of 2.5 V/A.

The 500mΩ resistor (R2) is selected by shorting SL2 and opening SL1, resulting in an output of 25V/A.

If both links are shorted the effective resistance is 45.4mΩ giving an output of 2.273V/A.

If both links are open, the optional leaded resistor R3 can be exclusively used as the sense resistor. The maximum power dissipation rating of the resistor must be appropriate to the load current level.

Configuration for different LOAD currents.

The board can be configured for different load currents by changing the SMD resistors or fitting a suitable wire-ended resistor and opening both solder links. It is important to ensure an appropriate value of R_S is selected to obtain the desired accuracy for a given output current.

The value of V_{OUT} is the voltage dropped across the sensing resistor, multiplied by 50.

Choosing a larger value for R_S gives a higher output voltage for a given current, resulting in better resolution, but at the expense of increased voltage drop and higher dissipation in R_S.

The ZXCT1023 is optimized for values of V_{SENSE} between 10mV and 100mV.

Accuracy

The ZXCT1023 has a typical 3% accuracy for a V_{SENSE} of between 10mV and 100mV. The accuracy of the output voltage will be influenced by the tolerance of the external sense resistor used. The ZXCT1023EV1 utilizes 1% sense resistors.

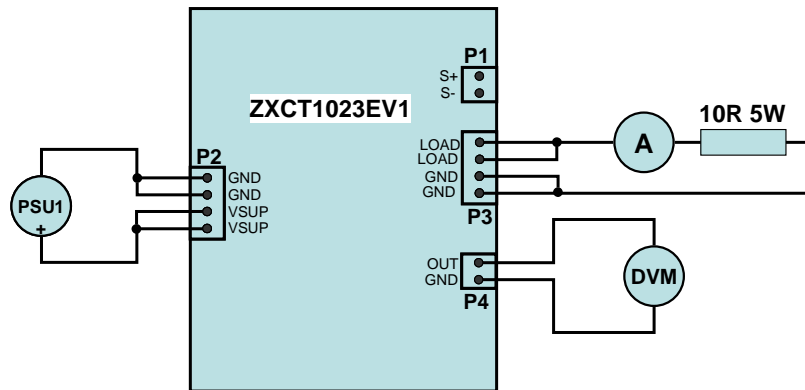


Figure 5. Test diagram for ZXCT1023EV1

SET-UP AND TEST

The board is preset to give an output Voltage of 2.5V for a load current of 1A. SL1 is shorted to connect in the 50mΩ (R2) sense resistor. To change the board to give an output Voltage of 2.5V for a current of 100mA, de-solder SL1 and short SL2. This connects the 500mΩ (R2) sense resistor.

Required Equipment

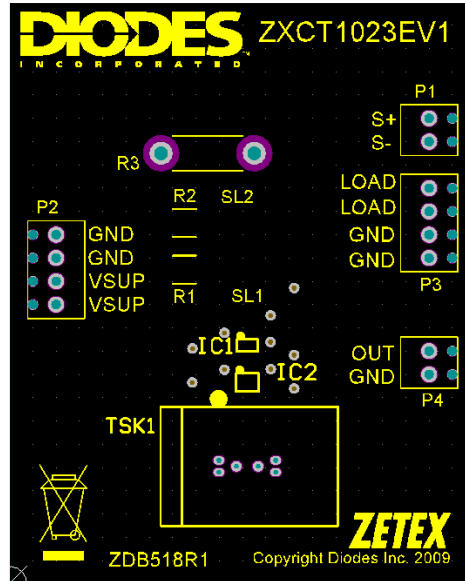
1. 1 x 10R 5W resistor (load).
2. 1 x adjustable bench PSU.
3. 2 x DVMs (one for voltage measurement and one for current measurement)

500mA load test

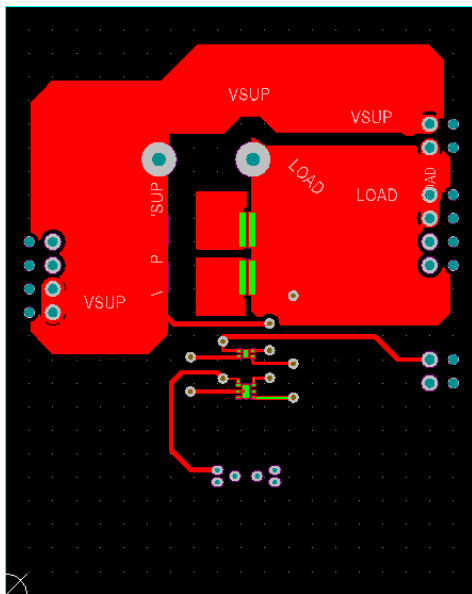
1. Ensure SL1 is shorted.
2. Connect the bench power supply, PSU1, between the VSUP and GND terminals as shown.
3. Connect the resistor in series with an ammeter set to its 1A or 2A range, between the LOAD and GND terminals - 10R 5W suggested. If using a different value, make sure its power rating is $P \geq 2(I^2 \cdot R)$. Make sure PSU1 is set to zero volts to start with.
4. Switch on PSU1 and adjust the voltage until the ammeter reads 500 mA \pm 2 mA,
5. Measure V_{OUT} with a DVM. The output voltage should read 1.25V \pm 0.05 V.

End of Test.

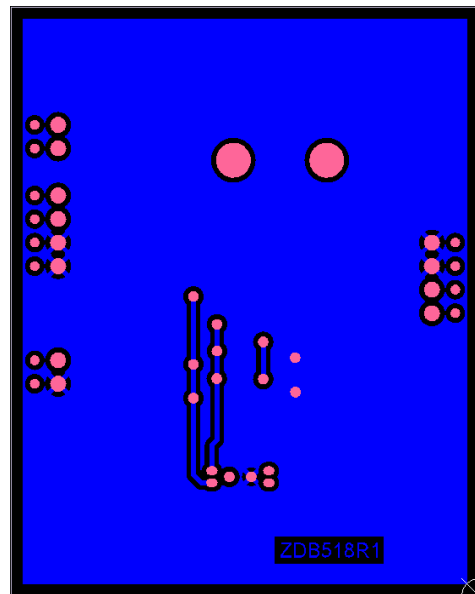
Note: V_{SENSE} can be monitored across connector P1.



Top Silk



Top Copper



Bottom Copper

Figure 6. Board layout

IMPORTANT NOTICE

DIODES INCORPORATED MAKES NO WARRANTY OF ANY KIND, EXPRESS OR IMPLIED, WITH REGARD TO THIS DOCUMENT, INCLUDING, BUT NOT LIMITED TO, THE IMPLIED WARRANTIES OF MERCHANTABILITY AND FITNESS FOR A PARTICULAR PURPOSE (AND THEIR EQUIVALENTS UNDER THE LAWS OF ANY JURISDICTION).

Diodes Incorporated and its subsidiaries reserve the right to make modifications, enhancements, improvements, corrections or other changes without further notice to this document and any product described herein. Diodes Incorporated does not assume any liability arising out of the application or use of this document or any product described herein; neither does Diodes Incorporated convey any license under its patent or trademark rights, nor the rights of others. Any Customer or user of this document or products described herein in such applications shall assume all risks of such use and will agree to hold Diodes Incorporated and all the companies whose products are represented on Diodes Incorporated website, harmless against all damages.

Diodes Incorporated does not warrant or accept any liability whatsoever in respect of any products purchased through unauthorized sales channels.

Should Customers purchase or use Diodes Incorporated products for any unintended or unauthorized application, Customers shall indemnify and hold Diodes Incorporated and its representatives harmless against all claims, damages, expenses, and attorney fees arising out of, directly or indirectly, any claim of personal injury or death associated with such unintended or unauthorized application.

Products described herein may be covered by one or more United States, international or foreign patents pending. Product names and markings noted herein may also be covered by one or more United States, international or foreign trademarks.

LIFE SUPPORT

Diodes Incorporated products are specifically not authorized for use as critical components in life support devices or systems without the express written approval of the Chief Executive Officer of Diodes Incorporated. As used herein:

A. Life support devices or systems are devices or systems which:

1. are intended to implant into the body, or
2. support or sustain life and whose failure to perform when properly used in accordance with instructions for use provided in the labeling can be reasonably expected to result in significant injury to the user.

B. A critical component is any component in a life support device or system whose failure to perform can be reasonably be expected to cause the failure of the life support device or to affect its safety or effectiveness.

Customers represent that they have all necessary expertise in the safety and regulatory ramifications of their life support devices or systems, and acknowledge and agree that they are solely responsible for all legal, regulatory and safety-related requirements concerning their products and any use of Diodes Incorporated products in such safety-critical, life support devices or systems, notwithstanding any devices- or systems-related information or support that may be provided by Diodes Incorporated. Further, Customers must fully indemnify Diodes Incorporated and its representatives against any damages arising out of the use of Diodes Incorporated products in such safety-critical, life support devices or systems.

Copyright © 2009, Diodes Incorporated

www.diodes.com

Sales offices**The Americas**

3050 E. Hillcrest Drive
Westlake Village,
CA 91362-3154
Tel: (+1) 805 446 4800
Fax: (+1) 805 446 4850

Europe

Kustermannpark
Balanstraße 59,
D-81541 München
Germany
Tel: (+49) 894 549 490
Fax: (+49) 894 549 4949

Taiwan

7F, No. 50,
Min Chuan Road
Hsin-Tien
Taipei, Taiwan
Tel: (+886) 289 146 000
Fax: (+886) 289 146 639

Shanghai

Rm. 606, No.1158
Changning Road
Shanghai, China
Tel: (+86) 215 241 4882
Fax (+86) 215 241 4891

Shenzhen

Room A1103-04,
ANLIAN Plaza, #4018
Jintian Road
Futian CBD,
Shenzhen, China
Tel: (+86) 755 882 849 88
Fax: (+86) 755 882 849 99

Korea

6 Floor, Changhwa B/D,
1005-5 Yeongtong-dong,
Yeongtong-gu, Suwon-si,
Gyeonggi-do, Korea 443-813
Tel: (+82) 312 731 884
Fax: (+82) 312 731 885